



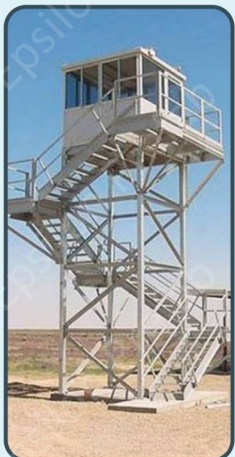
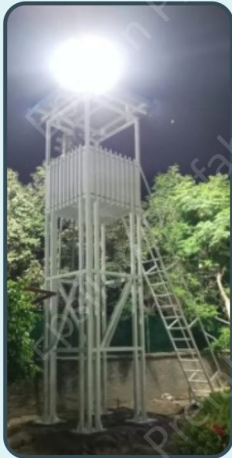
# EPSILON

Savvish Prefabricated Systems

PRE ENGINEERED STEEL BUILDINGS, PREFABRICATED STRUCTURES  
WATER STORAGE, SANITATION, SEWAGE TREATMENT AND ENVIRONMENTAL SOLUTIONS

## WATCHTOWERS

Customised pattern based on request  
Designed on Localised weather & Seismic conditions



Our Manufacturing units are strategically located at Ahmedabad, Faridabad NCR, Lucknow, Pune, Mumbai, Indore, Bhopal, Ranchi, Kishanganj, Bihar, Bengaluru, Hyderabad and Chennai.

**Epsilon Prefab**

502, The Sungrace Mall Above The Westside, Visat Gandhinagar Road Motera, Ahmedabad-380005, Gujarat



+91-9328927044/32



info@epsilonprefab.org



www.epsilonprefab.org

PAN India strong Sales & Distribution network



